



2907 El Caminito Street

La Crescenta, CA 91214



Nestled against the scenic foothills of the San Gabriel Mountains, La Crescenta is one of Los Angeles County's most sought-after residential communities. Known for its top-rated public schools, tree-lined streets, and welcoming small-town feel, the neighborhood offers a peaceful suburban lifestyle with convenient access to Glendale, Pasadena, Burbank, and downtown Los Angeles. Residents enjoy proximity to hiking and equestrian trails, nearby parks, and the expansive Angeles National Forest, making outdoor recreation a part of everyday life. The area features a diverse collection of well-maintained homes, from charming mid-century residences to larger custom properties with sweeping mountain views. With its strong sense of community, excellent schools, low-density residential character, and picturesque setting, La Crescenta continues to attract buyers seeking a balance of natural beauty, privacy, and accessibility within the Los Angeles area.



3 Bedrooms | 2.5 Bathrooms | 2,290 SF Interior | 6,053 SF Exterior



List price: Inquire with Agent Directions: West of La Crescent Avenue. 6 blocks north of Foothill Blvd. Address: 2907 El Caminito Street, La Crescenta, CA 91214 Website: www.2907ElCaminito.com

Expansive La Crescenta Historic Home - Perched on a Grassy Knoll with Breathtaking Verdugo Mountain Views

On a quiet residential street just above Foothill Blvd, this proudly perched 2-Story Traditional Cabin Home awaits your arrival! Impressive nature home with inspirational mountain views and natural stone and wood work throughout. Featuring 3 large bedrooms, 2.5 bathrooms, 2 communal living areas, bonus home office space and a 2-car garage. This home is replete with classic historic details, including custom craftsman millwork + high vaulted/beamed ceilings + leaded glass details. Wonderful flow for daily living and entertaining. The kitchen is classic yet updated, located in the center of the home. Featuring stainless steel appliances and unforgettable cornerstone bay window to grow your own herbs. All bathrooms are tastefully tiled with art-deco tiled walls and saltillo tile flooring.

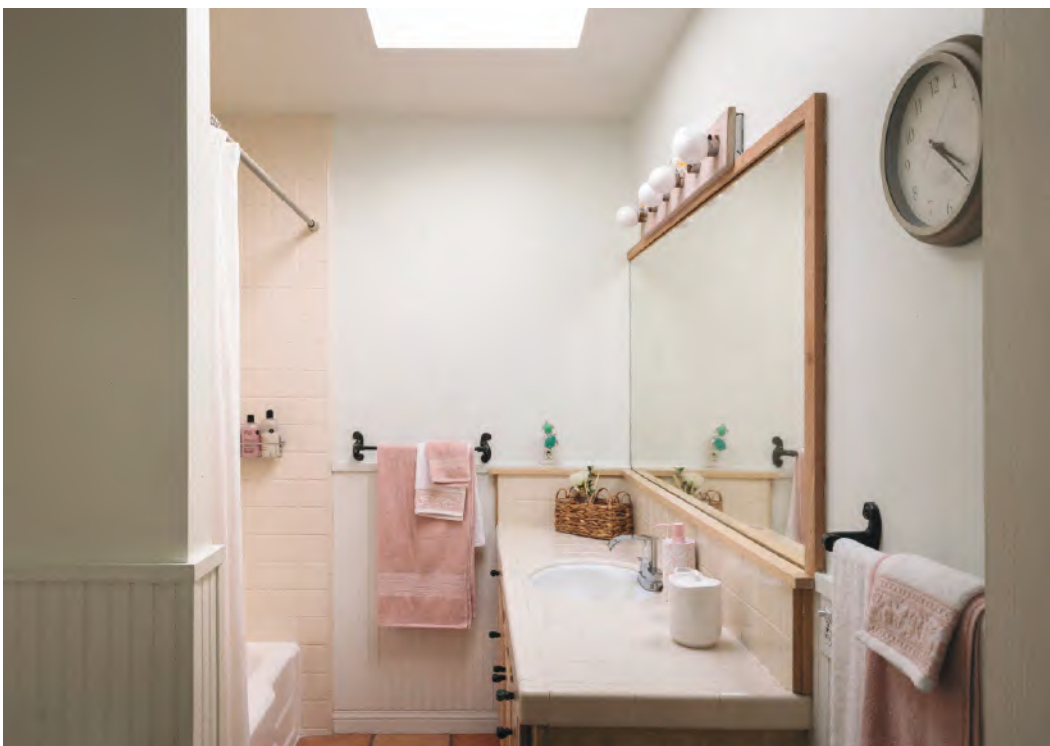
The primary suite upstairs is grand: With 3 closet spaces + direct access bathroom with soaking tub + step-down suite layout. Grassy front and backyards, with a BBQ Patio courtyard in rear and an upper deck view point of mountain ranges to the south (perfect zen spot!). With verdant vista views from all windows, you feel transported to a cabin lifestyle that offers peace and positive energy. This street is very quiet, and is located in the perfect middle point (in the best part of neighborhood above Foothill, but not so high into the mountains to feel isolated or too removed)

ZONED TO HIGHLY-SOUGHT "10/10" LA CRESCENTA SCHOOLS. Just a short stroll to all of Foothill's shops, cafes, and dining - and also close to 210 freeway access to get into Los Angeles anytime. Other upgrades include Central AC (2023), recessed lighting, and built-out loft storage in 2-car garage. A property that is best seen in person - we look forward to your visit soon. Welcome Home!



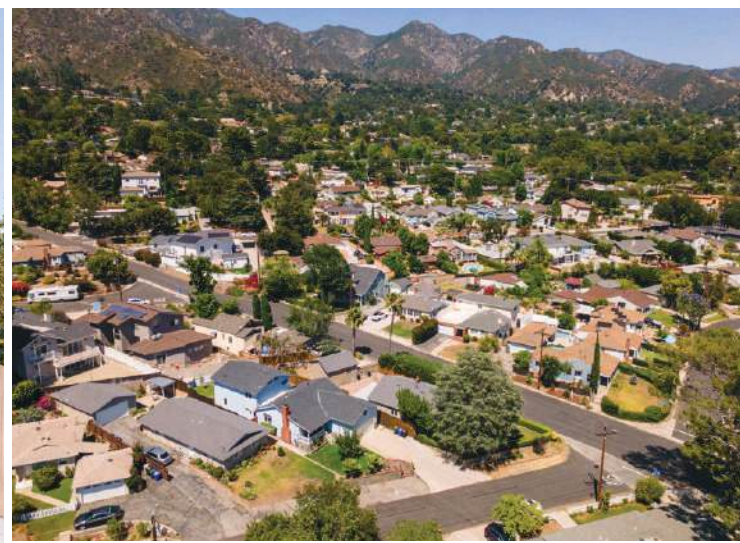






Property Highlights

- Classic 2-Story Traditional Cabin Home
- Rich with Historic Character Details
- Mountain Views
- 2 car garage
- Large 3 Bedroom Home with Bonus Office Area.
- Updated Kitchens and Bathrooms
- 2 Communal Living Spaces
- Newer Central AC System
- Grassy Front and Back Yards
- Great Location in La Crescenta. Short Stroll to Foothill Blvd
- Top Rated Schools



Jerry & Rachel Hsieh

Realtor / Owners

📞 310-228-8856

📞 424.242.8856

📧 jerry@kw.com

🌐 www.jerryANDrachel.com

📍 #01701809, #01913428



Jerry & Rachel
FINE HOMES AND INVESTMENTS

www.JerryANDRachel.com

All information deemed reliable but not guaranteed.
Buyer is advised to conduct their own investigation and satisfy themselves.