

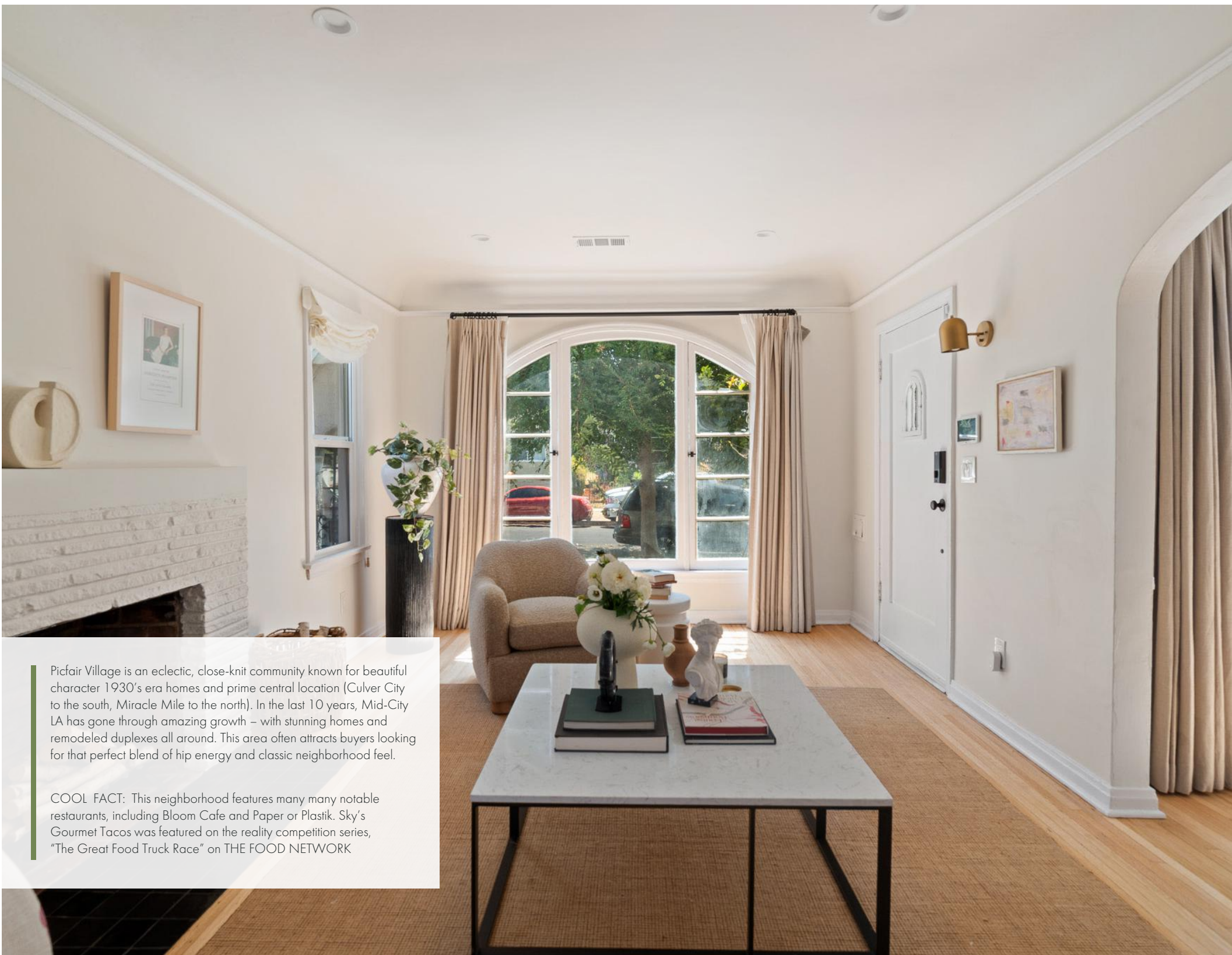


Jerry & Rachel
FINE HOMES AND INVESTMENTS



1511 Carmona Avenue

Los Angeles, CA 90019



Picfair Village is an eclectic, close-knit community known for beautiful character 1930's era homes and prime central location (Culver City to the south, Miracle Mile to the north). In the last 10 years, Mid-City LA has gone through amazing growth – with stunning homes and remodeled duplexes all around. This area often attracts buyers looking for that perfect blend of hip energy and classic neighborhood feel.

COOL FACT: This neighborhood features many many notable restaurants, including Bloom Cafe and Paper or Plastik. Sky's Gourmet Tacos was featured on the reality competition series, "The Great Food Truck Race" on THE FOOD NETWORK

Main Home & Bonus Guest Unit | 3 Bedroom | 3 Bathroom | 1,317 SF Interior | 5,318 SF Exterior



List Price: Upon Request

Directions: In Picfair Village. South of Pico Blvd, West of Hauser Blvd

Address: 1511 Carmona Avenue, Los Angeles, CA 90019

Website: www.1511carmona.com

Re-imagined Quaint Country English with Guest House and Grand Rear Yard

Warm classic character is elevated with modern design in this remodeled English home. Located in coveted Picfair Village on a quiet tree-lined street. Home features refinished oak hardwood floors throughout, historical coved ceilings, and gleaming natural light shining through original restored arch casement wood windows. Great charm and character intact throughout this home: Original hall built-in cabinets & the subtle chair rail molding details are just a couple of examples.

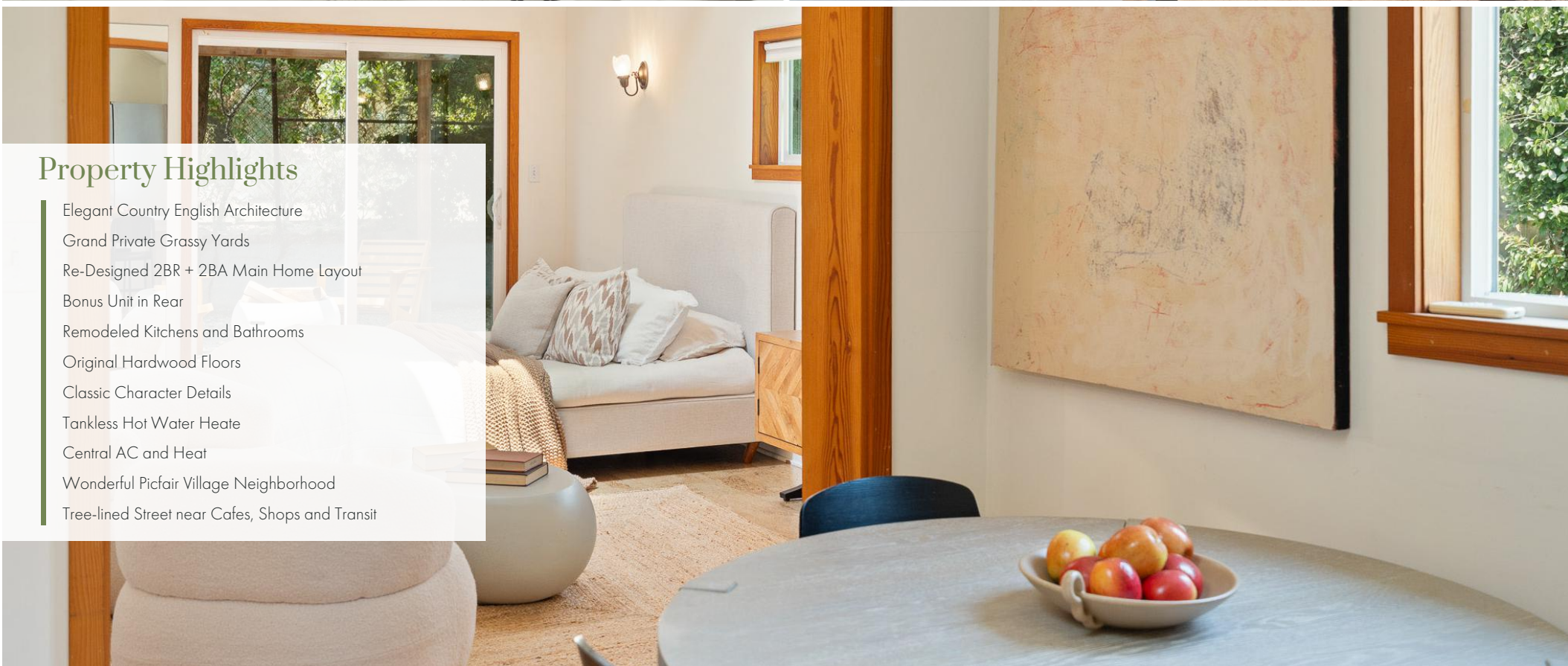
The kitchen and bathroom tile work are inspired and peaceful. Built-in banquette seating off the kitchen is the perfect casual dining spot for less formal dinners. Turnkey remodeled kitchen with new checkered tile floors, new stainless steel appliances, and new countertops. En-suite primary with french doors and remodeled bathroom with tub. Wonderful indoor/outdoor flow throughout the home. Deep grand backyard, with great shade trees and privacy hedges. On the exterior, you'll find three porches, usable driveway, manicured grassy lawns, and 3 covered pergola spaces, all of which make it a great space for entertaining (but most importantly: daily inspired living!). Walking past the rose garden, you'll find the rear guest unit: A versatile flex space that can function as an office, gym, bedroom, recreation room, or guest suite. High vaulted ceilings and multiple skylights makes the guest house feel larger than sq footage reflects, and the dual-paned windows and sliding doors allow ample natural light to flow.

Located in the heart of Picfair, just 2 short blocks to all the dining and shopping on Pico Blvd (think Bloom Cafe, Paper or Plastik, etc). Close to everything in all directions! Welcome home, and we look forward to your visit.









Property Highlights

- Elegant Country English Architecture
- Grand Private Grassy Yards
- Re-Designed 2BR + 2BA Main Home Layout
- Bonus Unit in Rear
- Remodeled Kitchens and Bathrooms
- Original Hardwood Floors
- Classic Character Details
- Tankless Hot Water Heater
- Central AC and Heat
- Wonderful Picfair Village Neighborhood
- Tree-lined Street near Cafes, Shops and Transit



Jerry & Rachel Hsieh

Realtor / Owners

📞 310-228-8856

📞 424.242.8856

✉️ jerry@kw.com

🌐 www.jerryANDrachel.com

📠 #01701809, #01913428



Jerry & Rachel
FINE HOMES AND INVESTMENTS

www.JerryANDRachel.com

All information deemed reliable but not guaranteed.
Buyer is advised to conduct their own investigation and satisfy themselves.